

2020

# SPWLA BANGKOK

1<sup>st</sup> to 5<sup>th</sup> March  
Jasmine City  
Hotel



## SPWLA Bangkok Asia Pacific Regional Conference 2020

**“Petrophysics: From Exploration to Brown-field”**  
*“The impact of Formation Evaluation on oil and gas field  
development decisions”*

**Registration is now open!!**

Register online [here](#)

Early Bird Fee (by 17 <sup>th</sup> Jan 2019)	USD 150
Registration Fee (by 14 <sup>th</sup> Feb 2020)	USD 200
Core store visit day trip (optional)	USD 60 (max 20 pax)
Golf Day (optional)	Payment at course

*Registration includes: 3-day Conference Sessions, Tea/Coffee, Lunch and  
Networking Social Event*

Hotel Accommodation - [book direct to “Jasmine City Hotel”](#)

Jittrakarn Charoenlib (Maew)

[bsm@jasminecity.com](mailto:bsm@jasminecity.com)

<https://www.jasminecity.com/>

(Group SPWLA Bangkok - special rate THB 3,000 /room/night)

For more information, please email: [ap2020@spwla.org](mailto:ap2020@spwla.org)





## Sunday 1<sup>st</sup> March 2020

### Core Store Visit (optional) – *Maximum of 20 participants*

A core visit trip is arranged to view 260ft of continuous core taken from a well in the northern part of Pattani Basin in comparison to log responses with experts on hand to lead discussions.

## Monday 2<sup>nd</sup> March 2020

### Technology Forum

Service companies have the opportunity to make commercial presentations of their latest products and services. Delegates will get a broad overview of new formation evaluation technology to better improve sub-surface understanding.

## Tuesday 3<sup>rd</sup> & Wednesday 4<sup>th</sup> March 2020

### Technical Conference

Two days of technical presentations from around the region. There will be 23 presentations on a diverse range of subjects which are all relevant to Petrophysicists and other sub-surface technical professionals working in the Asia-Pacific region. There will be case studies from India, Thailand, Malaysia, Indonesia, China, Japan and Australia with a mix of operating and service companies, academic institutions and consultants.

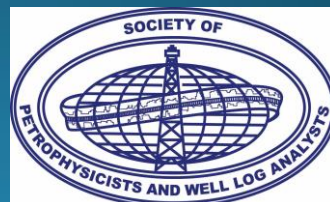
## Thursday 5<sup>th</sup> March 2020

### Golf Day (optional)

Bring your clubs and play at one of the many wonderful golf courses in Bangkok. Final costs and timing to be confirmed closer to the event.

### Organising Committee

Conference Chairman	: Andrew Cox
Technical Chairman	: Rick Aldred
Technology Forum Chairman	: Alex Beviss
Sponsorship Chairman	: Ryan Lafferty
Field Trip Leader	: Mohamed Saleh Efnik, PhD.



# 2020 New Technology Forum Day 1



Monday 2<sup>nd</sup> March 2020

Time	Title and Author
08:30 - 09:00	<b>Introduction by Chairman</b>
09:00 – 09:30	Insights into the flexibility of memory pulsed neutron-neutron technology and its applications for cased hole petrophysical evaluation. <b>Reza Khastoo, Scientific Drilling</b>
09:30 – 10:00	Low Cost Wireline Acquisition in Challenging Wells <b>Dr. Guy Wheater, Gaia</b>
10:00 – 10:30	Coffee Break
10:30 – 11:00	Integrated Wellbore Pressure Analysis for Better Well Planning <b>Fenny Chrisman, Emerson</b>
11:00 – 11:30	Real Time Pore Pressure Analysis in SE Asia <b>Paulino Villacastin, DHI Excellence Logging</b>
11:30 – 12:00	GAPS: Identifying fluid movement behind casing for well remedial decisions <b>Numan Phettongkam, Weatherford</b>
12:00 – 13:00	Lunch Break
13:00 – 13:30	Schlumberger Digital Platform for Petrophysics <b>Gritsadapong Leangvongpaisan, Schlumberger (SIS) Thailand</b>
13:30 – 14:00	Machine Learning & Data Analytics in IPT <sup>TM</sup> <b>Derek Crombie, Lloyd's Register</b>
14:00 – 14:30	Dual Energy CT Scanning: Millimeter-Scale Log for Core Intervals <b>Farrell Creado, Core Laboratories</b>
14:30 – 15:00	Coffee Break
15:00 – 15:30	Learn how Distributed Fiber Optic Sensing (DFOS) complements slickline logging by extracting more value from your data and gaining improved operational efficiency <b>Widyanto Andono, GoWell</b>
15:30 – 16:00	TBC <b>Schlumberger Drilling and Measurements</b>
16:00 – 16:30	TBC <b>Schlumberger Wireline</b>
16:30 – 17:00	TBC

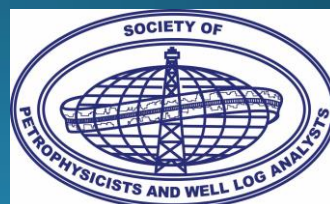


# 2020 Technical Programme Day 2



Tuesday 3<sup>rd</sup> March 2020

Time	Title and Author
08:30 - 09:00	<b>Welcoming address by Chairman and Keynote Address</b>
09:00 – 09:30	Permeability Prediction in a Complex Carbonate Reservoir in Rumaila, Iraq by Combining FZI with NMR. <b>Ibrahim B. Milad</b> <sup>1</sup> ; Russell Farmer <sup>1</sup> and Milad Saidian <sup>1</sup> <sup>1</sup> BP
09:30 – 10:00	Integration Lithofacies Modeling to Optimize the Production Evaluation on Complex Carbonate Reservoir. <b>Abu Bakar, M.S.A.</b> <sup>1</sup> , Tolioe, W.A. <sup>1</sup> , Robail, F.B. <sup>1</sup> , Ismail, M.S.B. <sup>1</sup> , Yen, K.K. <sup>1</sup> , and Theseira, K. <sup>1</sup> <sup>1</sup> PETRONAS Carigali Sdn Bhd
10:00 – 10:30	Coffee Break
10:30 – 11:00	Application of multi-component induction tool results in thinly laminated sands coupled with wire-line formation testing & sampling results for identifying reservoir fluids and contacts in a deep-water well. <b>Bhimpalli Sarah</b> <sup>1</sup> , C Shraavan Kumar <sup>1</sup> , B. L. Rao <sup>1</sup> <sup>1</sup> ONGC
11:00 – 11:30	Sustaining Gas Potential in Rainbow Area by Cracking from Shallow Pay and Thin-Laminated Using Triaxial Induction Tools and Borehole Imaging. <b>Kampanart Jankham</b> <sup>1</sup> , Sutasinee Kittisupalauk <sup>1</sup> , Thanaset Chuchaem <sup>1</sup> and Tawan Sookprasert <sup>1</sup> . <sup>1</sup> PTTEP
11:30 – 12:00	A New Technique for Evaluating Complex, Low Resistivity, Laminar Pay Intervals. <b>Rick Aldred</b> <sup>1</sup> and Tetsuya Yamamoto <sup>2</sup> . <sup>1</sup> Consultant. <sup>2</sup> Japan Petroleum Exploration Co., Ltd.
12:00 – 13:00	Lunch Break
13:00 – 13:30	How to do Quick-Look Shaly Sand Log Analysis with Confidence <b>Mark Deakin</b> <sup>1</sup> . <sup>1</sup> Petrophysics Pty. Ltd.
13:30 – 14:00	The Field A Reservoir Evaluation Mind Set Change. <b>Frederic Robail</b> <sup>1</sup> , Hazreen Bt Harris Lee <sup>1</sup> , William Amelio Tolioe <sup>1</sup> . <sup>1</sup> Petronas Carigali Sdn Bhd
14:00 – 14:30	Model Comparisons of Multivariate Statistics with Theoretical Predictions of Elastic Properties in Sandstones. <b>Thanyanat Akarapatima.</b> <sup>1</sup> <sup>1</sup> PTTEP
14:30 – 15:00	Coffee Break
15:00 – 15:30	Managing Fluid Saturation Uncertainties in Low Resistivity Gas Reservoirs: A Case Study from the "X" Field in the Baram Delta, Offshore Sarawak, Malaysia. <b>Abraham J.S. Simanjuntak</b> <sup>1</sup> , Johnny Y.C. Jin <sup>1</sup> , Dr. Gyuhwan Jo <sup>1</sup> , Steven M. Barker <sup>1</sup> , Quach Thu Vu <sup>1</sup> . <sup>1</sup> JX Nippon Oil and Gas Exploration (Malaysia) Ltd.
15:30 – 16:00	Hydrocarbon saturation calculation in tight sandstone reservoirs based on Bayesian inversion of dielectric logs. <b>Peiqiang Zhao</b> <sup>1,2</sup> , Jinhua Fu <sup>3,4</sup> , Yujiang Shi <sup>3,4</sup> , Gaoren Li <sup>3,4</sup> , Zhiqiang Mao <sup>1,2</sup> , Jiarui Xie <sup>1,2</sup> . <sup>1</sup> State Key Laboratory of Petroleum Resources and Prospecting, China University of Petroleum, Beijing 102249, China
16:00 – 16:30	Hydraulic Fracturing Prediction from Permeability Brittleness. <b>Jitkasam Satainpanich</b> <sup>1</sup> , Sutasinee Kittisupalauk <sup>1</sup> , Jakkrich Yingyuen <sup>1</sup> , Kritsada Charoenniwesnukul <sup>1</sup> . <sup>1</sup> PTTEP



# 2020 E-Posters & Refreshments Day 2

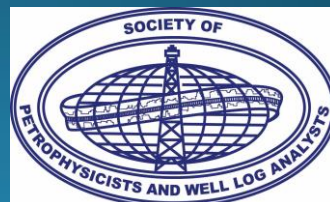


Tuesday 3<sup>rd</sup> March 2020

Time	Title and Author
16:40 – 17:00	<p>An improved method for petrophysical rock typing <b>Zhang Chong</b><sup>1,2</sup>, Tang Xiao<sup>1,2</sup>, Zhu Linqi<sup>1,2</sup>, Zhou Xueqing<sup>1,2</sup></p> <p><sup>1</sup> Key Laboratory of Exploration Technologies for Oil and Gas Resources (Yangtze University), Ministry of Education, Wuhan, Hubei 430100, China ;</p> <p><sup>2</sup> Hubei Cooperative Innovation Center of Unconventional Oil and Gas (Yangtze University), Wuhan, Hubei 430100, China</p>
	<p>Predict Resistivity Parameter for Each Rock Type Characteristic in heterogeneity reservoir and Low Resistivity Low Contrast Zone by Using Type Curve Analysis in S Field, Northern Kutai Basin, Indonesia. <b>Ikhsansyah Putra Pratama</b><sup>1</sup>, Diponegoro Ariwibowo<sup>2</sup>, Ahmad Yuda Pratama<sup>3</sup>.</p> <p><sup>1</sup> Institute Technology Bandung</p> <p><sup>2</sup> Haliburton</p> <p><sup>3</sup> Pt. Ferg Geosains Indonesia</p>

Time	Title and Author
17:05 – 17:25	<p>Well Integrity Issues in an Oil Brown Field – The Importance of Petrophysicist. <b>Amirul Afiq bin Yaakob</b><sup>1</sup>.</p> <p><sup>1</sup> Petronas Carigali Sdn Bhd</p>
	<p>Research on Remaining Reservoir Prediction with Time-Lapse VSP Data in Brown-Fields of Northwest China. <b>Cai Zhidong</b><sup>1</sup>, Wang Shize<sup>2</sup>, Wang Yanhua<sup>3</sup>.</p> <p><sup>1</sup> BGP Inc., CNPC; China University of Geoscience, Beijing</p> <p><sup>2</sup> BGP Inc., CNPC; Chengdu University of Technology</p> <p><sup>3</sup> BGP Inc., CNPC</p>

Time	Title and Author
17:30 – 17:55	<p>Automated Well Log Conditioning for Petrophysical Interpretation <b>Malleswar Yenugu</b><sup>1</sup> and Russell Roundtree<sup>1</sup></p> <p>IHS Markit, Houston, USA</p>
	<p>Reconciliation of permeability at various scale in constructing representative permeability model. <b>Thanapala Singam Murugesu</b><sup>1</sup>.</p> <p><sup>1</sup> Petronas</p>



# 2020 Technical Programme Day 3



Wednesday 4<sup>th</sup> March 2020

Time	Title and Author
08:30 - 09:00	Challenging the conventional: Acoustic Spectral Noise Tool vs Conventional Leak Detection Logging Tool. <b>Amirul Afiq bin Yaakob</b> <sup>1</sup> . <sup>1</sup> Petronas Carigali Sdn Bhd
09:00 – 09:30	Effect of crude viscosity to nuclear magnetic resonance (NMR) responses in different types of reservoirs: An experimental study. Wei Zhang <sup>1</sup> , <b>Yi Li</b> <sup>1</sup> , Ping Zhang <sup>1</sup> , Yuliang Qu <sup>1</sup> , Xiaoqiang Du <sup>1</sup> , Jianyong Zhang <sup>1</sup> . <sup>1</sup> China Oilfield Services Ltd. COSL
09:30 – 10:00	New Frontiers in Core Analysis for Advanced Reservoir Characterization Based on Continuous Data from Whole Cores. <b>C. Germay</b> <sup>1</sup> , T. Lhomme <sup>1</sup> , T. Richard <sup>1</sup> . <sup>1</sup> EPSLOG
10:00 – 10:30	Coffee Break
10:30 – 11:00	Fluid Mapping-While-Drilling De-risks Reservoir and Fluid Data Acquisition Workflow in a Brown Field. <b>Norsharmila A Wahab</b> <sup>1</sup> , Muhammad Haniff B Suhaimi <sup>1</sup> , Aldrick Garcia Mayans <sup>2</sup> , Shahid Haq <sup>2</sup> . <sup>1</sup> PETRONAS Carigali Sdn Bhd. <sup>2</sup> Schlumberger
11:00 – 11:30	Challenge The Status Quo: The Game Changer and New Breakthrough In Hydrocarbon Fluid Identification Via In-Situ While Drilling Fluid Analyzer. <b>Siti Najmi Farhan binti Zulkipli</b> <sup>1</sup> . PETRONAS Carigali Sdn Bhd
	Identification of fluids in ultra-low mobility Gollapalli formation of Nagayalanka field of KG Basin, India - A case study. <b>C.H Ramakrishna</b> <sup>1</sup> , A R Ramyasri <sup>1</sup> , B S Reddy <sup>2</sup> , <sup>1</sup> SG (wells), ONGC <sup>2</sup> GM (wells), ONGC
12:00 – 13:00	Lunch Break
13:00 – 13:30	Geomechanics and Improved Fluid Design helped to minimise time-dependent failures for better formation evaluation in Development Wells in a Brown field in Offshore South East Asia. <b>Avirup Chatterjee</b> <sup>1</sup> , Priveen Raj Santha Moorthy <sup>1</sup> , Abdul Latip, Mohamad Hafiz <sup>2</sup> , Amitava Ghosh <sup>3</sup> Baker Hughes, Malaysia, <sup>2</sup> ROC Oil (Sarawak) Sdn. Bhd. <sup>3</sup> Baker Hughes, Australia
13:30 – 14:00	Integrated Cased Hole Formation Evaluation and Well Integrity, Well Intervention Workflow to Optimize Production and Reservoir Management in a Mature Field. <b>Luis F Quintero</b> <sup>1</sup> , Jose Mata <sup>1</sup> , Andres Felipe Díaz <sup>1</sup> , Dilianne Gonzalez <sup>1</sup> , Tiziano Mancini <sup>1</sup> , Freeman Hill <sup>1</sup> , German Martinez <sup>1</sup> , Laura Martel <sup>1</sup> . <sup>1</sup> Halliburton
14:00 – 14:30	Production Logging: Applications, Pitfalls and Advanced Techniques. <b>Farrukh Hamza</b> <sup>1</sup> , Lee Fox <sup>1</sup> , Gibran Hashmi <sup>1</sup> , Mehdi Azari <sup>1</sup> . <sup>1</sup> Halliburton
14:30 – 15:00	Coffee Break
15:00 – 15:30	Petrophysics Reservoir Characterization for Production Optimization. <b>Sirichai Mahamat</b> <sup>1</sup> , <sup>1</sup> PTTEP
15:30 – 16:00	Unlocking Nature’s Secrets through Advanced Geosteering to Map Complex Stacked Sandstone Channel Systems Offshore Ghana While Drilling. Lina Sowah <sup>1</sup> , Oluwatoyin Olagunju <sup>2</sup> , Willi Tsimba <sup>2</sup> , Marcus Turner <sup>2</sup> , Amarjit Bisain <sup>2</sup> and <b>Doug Murray</b> <sup>2 1</sup> . Tullow Oil Ghana. <sup>2</sup> Schlumberger
16:00 – 16:30	Petrophysical Reservoir Modeling from 3D Seismic Survey. <b>Wesley Emery</b> <sup>1</sup> . <sup>1</sup> iRPM Pty Ltd.
16:30 – 17:00	<b>Closing Remarks and Best Paper Presentation - Chairman</b>



Sunday 1<sup>st</sup> March 2020

## CORE VISIT

### AYUTTAYA | FULL DAY | BY VAN | MAX 20 PAX

A Core Visit Trip is arranged to see 260ft continuous core taken from a well in the northern part of Pattani Basin, Gulf of Thailand. Then, relating core sedimentary description to a comprehensive set of wireline log responses.

Interpreted lithofacies types from the core include channel sands, sand flats and flood plain mudstones. The cored interval was deposited in a low sinuosity braid plain or alluvial fan under semi-arid condition.

## Schedule

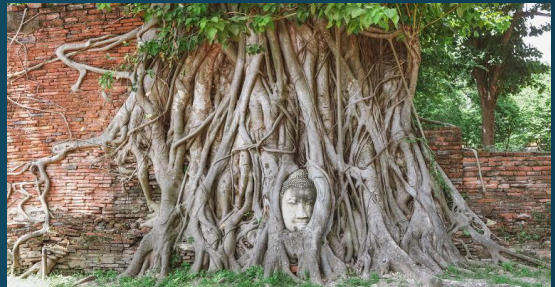
07:30 Departure from Bangkok (TBC)  
 08:30 Arrive at core laboratory. Safety introduction  
 09:00 Core geological discussion (I)  
 10:15 Break  
 10:45 Core geological discussion (II)  
 12:00 Lunch  
 13:30 Sightseeing programs  
 16:30 Depart from Ayutthaya  
 17:30 Arrive at Bangkok (TBC)

## Price per person: \$60

**Included in the trip** - Transportation, Breaks, Lunch  
 Sightseeing trip in the Historic City of Ayutthaya!

## What to bring:

Hat, Sunglasses, Hiking/comfortable closed-in shoes



# Sponsors



A special thanks to all our Technology Forum sponsors.  
Additional sponsorship opportunities are still available



## Schlumberger

**EXLOG**  
EXCELLENCE LOGGING



## Weatherford®



## Scientific Drilling



Lloyd's  
Register



**BAKER  
HUGHES**  
a GE company

